

CLASSIC 2 PLUS



LITHIUM BATTERY

● 8 YEAR WARRANTY ● NO MAINTENANCE ● STEEL PACK

BODY & CHASSIS

TPO injection moulding front and rear body

POWER

48V lithium battery
48V 6.3KW AC motor
400 Amp Evolution AC controller
25A Evolution on-board charger

DIMENSIONS

Classic 2 plus: 94"x55"x72"

LSV Package

- 1.MSO
- 2.VIN number
- 3.License plate light
- 4.Reflectors
- 5.DOT foldable acrylic windshield

FEATURES

- Two tone seat
- Color matched Dash with four cup holders / cell phone holder
- 14"Aluminum Wheel with color insert/215/35R14 Radial DOT Tire
- USB
- 9 inch touchscreen with back-up camera (Radio, Music, Movie, Speedometer, Bluetooth, Back-up camera, Car App connetion)



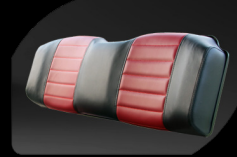
9 inch touchscreen with back-up camera



Color matched Dash with four cup holders/cell phone holder



14"Aluminum Wheel with color insert/215/35R14 Radial DOT Tire



Two tone seat



Luxury steering wheel

Color matching standard



BLACK SAPPHIRE



PEARL WHITE

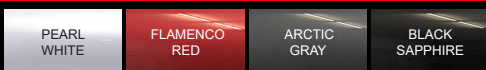


ARCTIC GRAY



FLAMENCO RED

Optional color



EVOLUTION ELECTRIC VEHICLES INC
California Offices: 2620 Palisades Drive, Corona CA 92882
Distribution Centers: Grand Prairie, TX; Orlando, FL
951-268-6689 info@evolutionelectricvehicle.com
evolutionelectricvehicle.com

